



Greener Products, Better World!

Vol 022

CONTENTS

READY STOCK



CANVAS

Monogram Series Of Canvas Bag	01
Designer Canvas Bag Tote Bag	02 - 06
Silk Twilly Scarf	07
Exclusive Carrier Bag (Medium)	08
Cotton Mesh Drawstring Storage Pouch	08
Exclusive Carrier Bag	09
Foldable Bag	10
Drawstring	11
Carrier Bag	11 - 13
Gift Pouch With Drawstring	14 - 15
Book Band Case	15
Multi-Purpose Zipper Pouch	16
Sling Bag	17
CLEARANCE	17



JUTE

Carrier Bag	19 - 21
Bottle Bag	22
Carrier Bag	23 - 25
Sling Bag	25
Storage Box	26
Organiser	26
CLEARANCE	27



LINENETTE

Foldable Bag	29
Carrier Bag	30
Gift Pouch With Drawstring	31
Document Case	31



JUCO

Carrier Bag	33
Laptop/ Document Bag	33



FELT

Multi-Purpose Case	35 - 36
Multi-Purpose Zipper Pouch	36
Multi-Purpose Document Bag	37
Carrier Bag	37 - 40
CLEARANCE	40 - 41



NON-WOVEN

Carrier Bag (Sewing)	43 - 44
Carrier Bag (Ultrasonic)	45 - 46
2-In-1 Cooler & Warmer Bag	46 - 47
CLEARANCE	47 - 48



NYLON

Foldable Fruits Bag	51
Extendable & Foldable Travelling Bag	52
Foldable Backpack	52
Foldable Carrier Bag	53
Fluorescent Foldable Drawstring Bag	53
2-In-1 Cooler & Warmer Bag	54
Drawstring Bag	54
Travel Organiser	55
CLEARANCE	55



GOOD

2-In-1 Cooler & Warmer Bag	57
Sling Bag	58
Laptop Backpack	58 - 62
Shoe Bag	63
CLEARANCE	64



RECYCLE PAPER

Recycle Paper	66
---------------	----



CUTEY FRUITY

Cutey Fruity	68 - 69
--------------	---------



ECO STATIONERY

Bamboo Pen	71 - 72
Pencil	73
Message Box	73
Notebook	74 - 76
CLEARANCE	77



GREEN LIVING PRODUCT

Straw Set	80 - 81
Rice Husk	83
Organic Wheat Cutlery Set	85
Organic Wheat Tumbler	86 - 88
Organic Wheat Lunch Box	89 - 91
ECO-Silicone	93
18/304 Stainless Steel Lunch Box	95
PP Lunch Box	96
Thermal Flask	97
Bamboo Towel	99
Cotton Towel	101
Umbrella	102 - 103
LCD Writing Board	103
PU ID Card With Refillable Bottle	104
Refillable Bottle	104
Container	105
Multi-Purpose Zipper Pouch	105
Yonker Oximeter	106
Face Shield	106 - 107
4 Layers Washable Antibacterial Nano Face Mask	108
3 Layers Washable Antibacterial Nano Face Mask	108 - 109
CLEARANCE	110 - 111

CUSTOM MADE

	112 - 118
--	-----------

Disclaimer: Products displaying the trademarks of various companies are shown only to illustrate the extensive graphic capabilities of ECO-friend and ECO-fans. All trademarks displayed are property of the trademarks' owner; and do not constitute endorsement of ECO-friend and ECO-fans products or any relationship between ECO-friend, ECO-fans and the trademark owner. Trademark bearing merchandise can only be purchased by or through the trademark owner company.



Why **ECO-friend**?

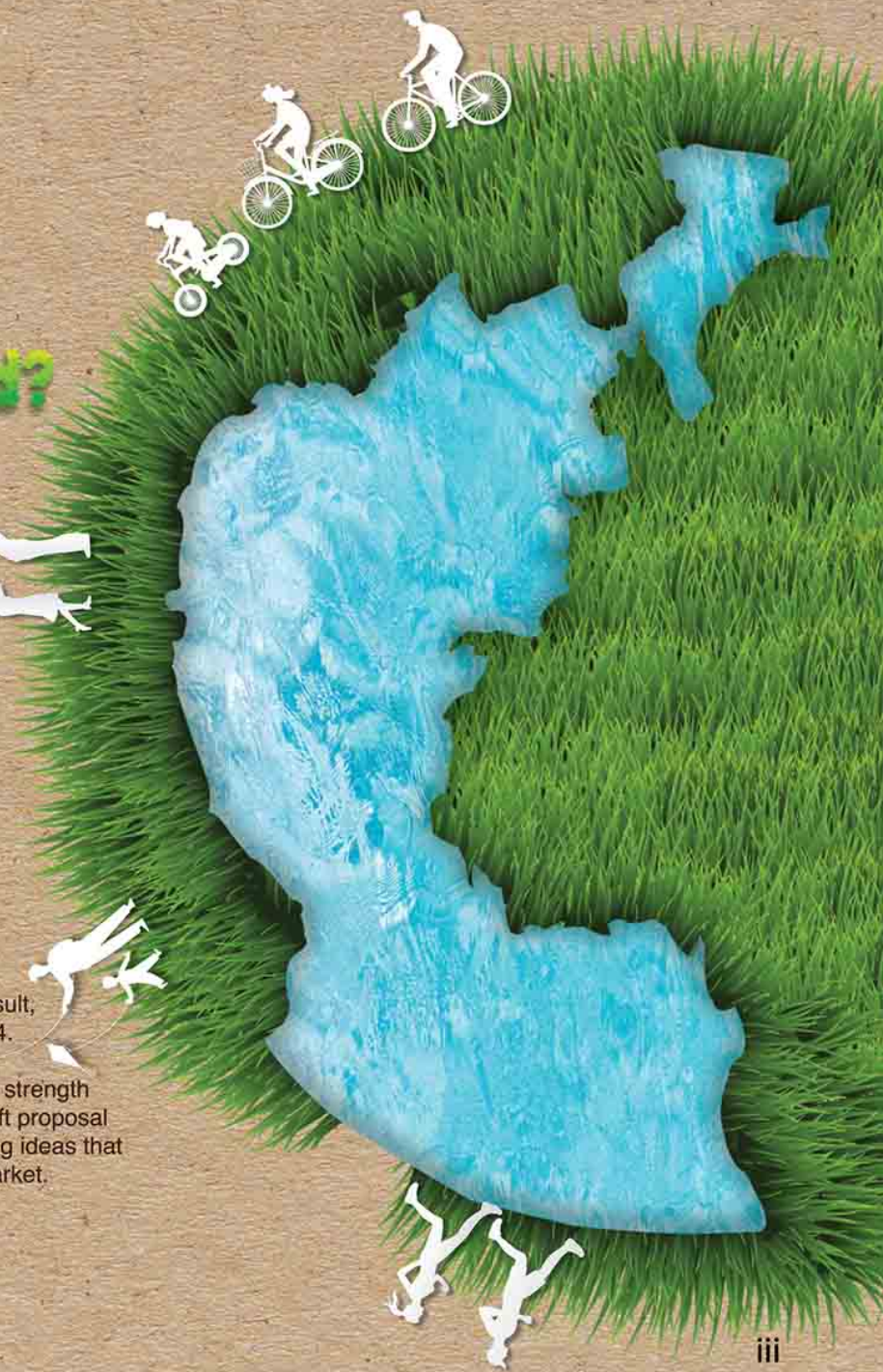
ECO-friend has the widest range of eco products collection which will be always on track on the updated material features and improvements based on the market trend.

Clients can be rest assured that we deliver the good quality product and printing for their optimum satisfaction.

Beside quality, we as a manufacturer also work out the best deal and competitive price to meet up our clients' requirement.

ECO-friend has been in the market since 2007 and become one of the reputable brand now. Our products has been endorsed by Malaysia Good Design. It has also been certified as honesty product (13th Asia Pacific International Honesty Enterprise - Keris Award 2014) and Asia Honesty Product Award in 2015. With such outstanding result, we have achieved SME Rising Star Award in 2014.

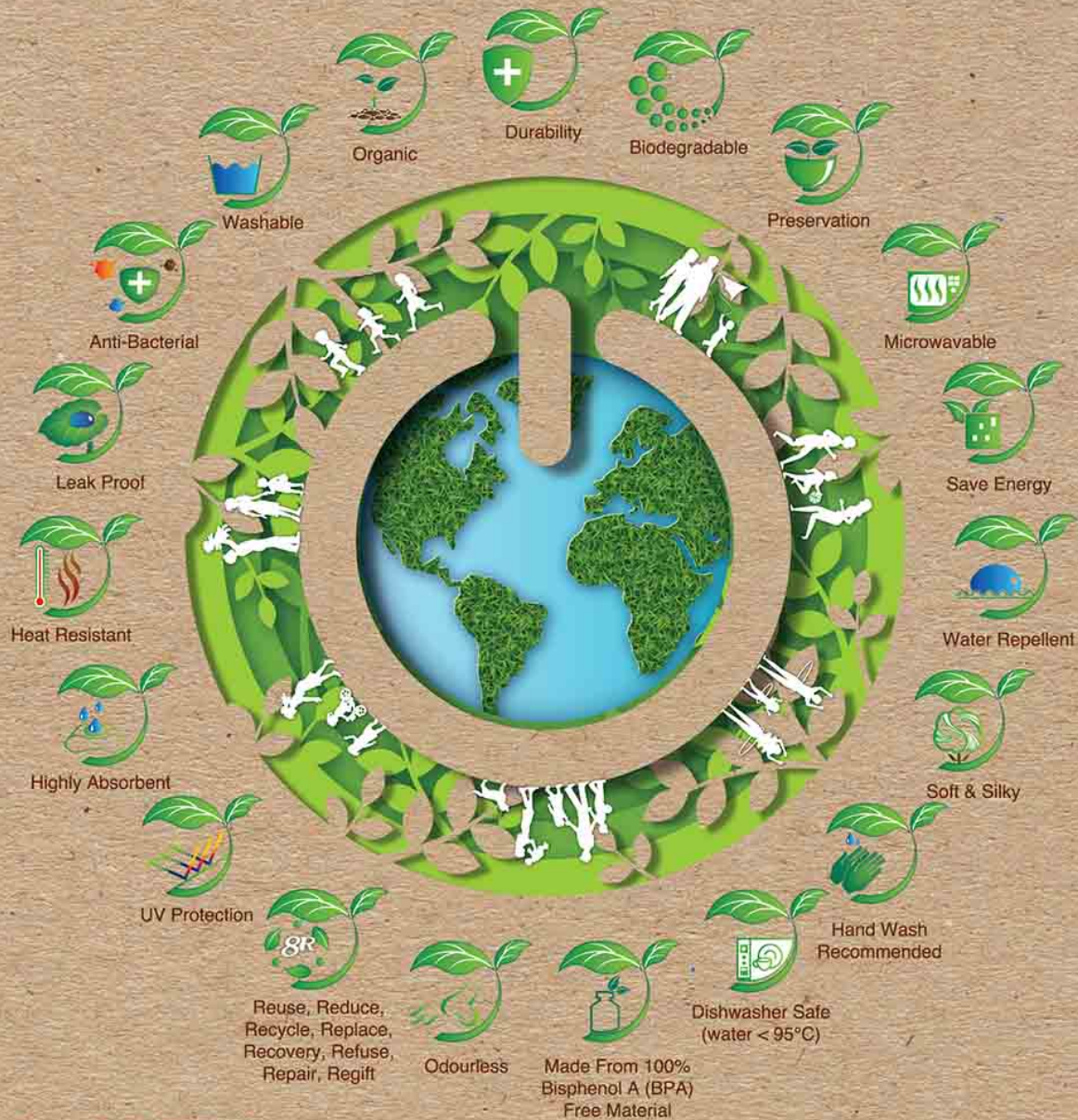
We are not only a premium gift house, our unique strength is providing a complete advertising service, like gift proposal to suit the marketing and events and gift packaging ideas that can make impact on overall appearance in the market.





- **REUSE** is to use back the materials in their original form instead of throwing them away. This leads to source reduction and waste prevention.
- **REDUCE** is to cut the unnecessary waste and to minimise the consumption of new sources.
- **RECYCLE** is the process by which materials are collected and used as raw materials for new products.
- **REPLACE** the products which are safer and eco friendly for our environment. By replacing the products which is more durable rather than disposable one can help to save energy and resources.
- **RECOVERY** is to convert waste into resources. Resource Recovery occurs after reduce, reuse and recycle have been attempted.
- **REFUSE** is to avoid buying products that are not sustainable or recyclable.
- **REPAIR** is to repair products rather than buy new one.
- **REGIFT** is share & be part of the gift economy.





GO GREEN

Going green to be a lifestyle choice with decisions and actions are based on working to save the world is something we can easily strive to do. The simple way is to use eco products to promote green living that help to conserve energy and also prevent air, water and noise pollution. They prove to be boon for the environment and also prevent human health from deterioration.

New

Beginnings, Changing & Challenges

Time keeps changing, and all industries must reform and progress in this new era. In order to keep up with the times, we will launch a series of environmentally friendly products that are different from the previous ones. We are rigorously checking the overall product design, quality, advertising printing and e-commerce shopping platforms to ensure that we are able to provide our quality customers with the concept of environmental protection. The premise and fashionable high-grade design combination out of the novel environmental protection products, please stay tuned.



Canvas

Canvas is a dense and heavy plain-woven fabric, thus it has a significant amount of sturdiness. There are lots of raw materials which canvas can be made of, but cotton is often among the most popular ones as it gives a great volume of softness. Combining its natural characteristics of being durable and soft in handle, it is of no doubt that canvas is suitable to be made into bags.

By having a canvas bag, you no longer have to tolerate with bags that are easily worn out. A plus point, it is washable, so you don't have to worry about not being able to remove the stain you accidentally left on it. Not to be forgotten, our canvas bag is an eco-friendly product, so you are contributing to saving the environment by having it in hands. We have a series of canvas bags, vary in designs, to suit your individual needs.





MONOGRAM
Series of Canvas Bag
B0377



Custom Made Printing

- ✓ Logo
- ✓ Name
- ✓ Event



MONOGRAM

Series of Canvas Bag



**Monogram Series
Of Canvas Bag**

Material : 10oz / 283.5gsm Laminated Canvas

Size(cm) : 43 (W) x 35 (H) x 15 (D)

(inch) : 16.9 (W) x 13.8 (H) x 5.9 (D)

Max
Capacity : 15kg



Laminated
Inner Layer



Large Storage



Cotton Core
Rope Handle

Ruby Red



B0377

Olive Green



Very Peri



Denim Blue





Designer Canvas Tote Bag

I Love Malaysia

Mandalas Batik

Colourful Floral

National Bird of Malaysia



Custom Made Printing

- Logo
- Name
- Event



Designer Canvas Tote Bag (Colourful Floral)

Material : 10oz / 283.5gsm Laminated Canvas

Size(cm) : 41 (W) x 34 (H) x 18.5 (D)

(inch) : 16.1 (W) x 13.4 (H) x 7.3 (D)

Max Capacity : 15kg



Laminated Inner Layer



Large Storage



Cotton Core Rope Handle



Purple



Back

Turquoise



Back



B0380



Front

Front

B0381

Black



Back



Front



Designer Canvas Tote Bag (I Love Malaysia)

Material : 10oz / 283.5gsm Laminated Canvas

Size(cm) : 41 (W) x 34 (H) x 18.5 (D)

(inch) : 16.1 (W) x 13.4 (H) x 7.3 (D)

Max Capacity : 15kg



Laminated Inner Layer



Large Storage



Cotton Core Rope Handle





B0382

Blue



Designer Canvas Tote Bag (Hornbill)



Material : 10oz / 283.5gsm Laminated Canvas

Size(cm) : 41 (W) x 34 (H) x 18.5 (D)

(inch) : 16.1 (W) x 13.4 (H) x 7.3 (D)

Max Capacity : 15kg



Laminated Inner Layer



Large Storage



Cotton Core Rope Handle

B0383

Maroon



Designer Canvas Tote Bag (Peacock)

Material : 10oz / 283.5gsm Laminated Canvas

Size(cm) : 41 (W) x 34 (H) x 18.5 (D)

(inch) : 16.1 (W) x 13.4 (H) x 7.3 (D)

Max Capacity : 15kg



Laminated Inner Layer



Large Storage



Cotton Core Rope Handle

Black



B0384



Designer Canvas Tote Bag (Mandalas Batik)

Material : 10oz / 283.5gsm Laminated Canvas

Size(cm) : 41 (W) x 34 (H) x 18.5 (D)

(inch) : 16.1 (W) x 13.4 (H) x 7.3 (D)

Max Capacity : 15kg



Laminated Inner Layer



Large Storage



Cotton Core Rope Handle

Maroon





B0370

Green



Designer Canvas Tote Bag (Batik)

Material : 10oz / 283.5gsm Laminated Canvas

Size(cm) : 41 (W) x 34 (H) x 18.5 (D)
(inch) : 16.1 (W) x 13.4 (H) x 7.3 (D)

Max Capacity : 15kg



Laminated Inner Layer



Large Storage



Cotton Core Rope Handle

B0371



Designer Canvas Tote Bag (Mountain)

Material : 10oz / 283.5gsm Laminated Canvas

Size(cm) : 41 (W) x 34 (H) x 18.5 (D)
(inch) : 16.1 (W) x 13.4 (H) x 7.3 (D)

Max Capacity : 15kg

Maroon



Laminated Inner Layer



Large Storage



Cotton Core Rope Handle





Premium Silk Twilly Scarf

Material : Silk

Size(cm) : A: 97 (H) x 8 (W)

B-F: 99 (H) x 6.5 (W)

(inch) : A: 38.2 (H) x 3.2 (W)

B-F: 39 (H) x 2.6 (W)



B0374

B0375



Silk Twilly Scarf

Material : Silk

Size(cm) : 99 (H) x 4 (W)

(inch) : 39 (H) x 1.6 (W)



B0378



Natural Pink Blue Green



Exclusive Carrier Bag (Medium)

Material : 8oz / 226.8gsm Laminated Canvas
Size(cm) : 26 (W) x 21 (H) x 15 (D)
(inch) : 10.2 (W) x 8.3 (H) x 5.9 (D)
Max Capacity : 10kg



Laminated Inner Layer



Cotton Core Rope Handle

B0388



Cotton Mesh Drawstring Storage Pouch

Material : Organic Cotton
Size(cm) : S: 20 (W) x 25 (H)
M: 25 (W) x 30 (H)
L: 30 (W) x 40 (H)
(inch) : S: 7.9 (W) x 9.8 (H)
M: 9.8 (W) x 11.8 (H)
L: 11.8 (W) x 15.7 (H)



Organic Cotton, Non-Toxic



Good Air Permeability To Keep Vegetables & Fruits Fresh



Ideally For Storage Vegetables, Fruits, Toys, Cosmetics, Etc.





Exclusive Carrier Bag

Material : 8oz / 226.8gsm Laminated

Canvas **Natural Bag**

Size(cm) 10oz / 283.5gsm Laminated

(inch) Canvas **Black Bag**

Max Capacity : 41 (W) x 32 (H) x 18 (D)

: 16.1 (W) x 12.6 (H) x 7.1 (D)

: 15kg



Laminated Inner Layer



Large Storage



Cotton Core Rope Handle



B0355

Black

Natural

Pink

Blue

Green



B0249

Natural / Green

Natural / Brown



Exclusive Carrier Bag with Coconut Button

Material : 16oz / 453.6gsm Canvas

Size(cm) : 44 (W) x 34.5 (H) x 13 (D)

(inch) : 17.3 (W) x 13.6 (H) x 5.1 (D)

Max Capacity : 15kg



Side Depth



Coconut Button Closure



B0354



Pink

Green

Blue



Foldable Bag With Colourful Pocket

Material : 6oz / 170.1gsm Canvas (Bag)
8oz / 226.8gsm Canvas (Colourful Pocket)

Size (cm) : 37 (W) x 42 (H)
(inch) : 14.6 (W) x 16.5 (H)

Max Capacity : 6kg



Front Pocket



Foldable into Compact Size



Side View

B0283



Foldable Bag With Coconut Button

Material : 8oz / 226.8gsm Canvas
Size(cm) : 43 (W) x 39 (H) x 11 (bottom depth)
(inch) : 17 (W) x 15.4 (H) x 4.3 (bottom depth)

Max Capacity : 7kg



Bottom Depth



Foldable into Compact Size



Natural

Green





Drawstring Bag

Material : 5oz / 141.7gsm Canvas

Size(cm) : 36 (W) x 43 (H)

(inch) : 14.2 (W) x 16.9 (H)

Max Capacity : 5kg



Grab Handle



Backpack

Natural

Green

Black

B0187



B0348

Natural



Carrier Bag

Material : 5oz / 141.7gsm Canvas

Size(cm) : 35 (W) x 33 (H) x 10 (bottom depth)

(inch) : 13.7 (W) x 13 (H) x 3.9 (bottom depth)

Max Capacity : 8kg



Bottom Depth



Crossed Stitch
On Handle



B0284



Carrier Bag

Material : 5oz / 141.7gsm Canvas

Size(cm) : 38 (W) x 42 (H)

(inch) : 15 (W) x 16.5 (H)

Max Capacity : 5kg

Natural

Red

Green

Blue

Black



Side View



Large Storage



Crossed Stitch
On Handle



Carrier Bag

Material : 5oz / 141.7gsm Canvas

Size(cm) : 35 (W) x 42 (H) x 10 (D)

(inch) : 13.8 (W) x 16.5 (H) x 4 (D)

Max Capacity : 5kg



Natural

Black



Side View



Large Storage



Crossed Stitch
On Handle



Carrier Bag

Material : 8oz / 226.8gsm Canvas

Size(cm) : 31 (W) x 37 (H)

(inch) : 12.2 (W) x 14.6 (H)

Max Capacity : 7kg



Side Depth



Crossed Stitch
On Handle



B0034

Natural

Black



B0035

Natural



Carrier Bag

Material : 8oz / 226.8gsm Canvas

Size(cm) : 34 (W) x 32 (H) x 10.5 (D)

(inch) : 13.4 (W) x 12.6 (H) x 4.1 (D)

Max Capacity : 7kg



Side View



B0353



Natural



Gift Pouch With Drawstring

Material : 5oz / 141.7gsm Canvas

Size(cm) : 15 (W) x 18 (H)

(inch) : 5.9 (W) x 7.1 (H)

Max Capacity : 1kg



Compact Size



Drawstring

B0323



Gift Pouch With Drawstring

Material : 5oz / 141.7gsm Canvas

Size(cm) : 19 (W) x 19 (H)

(inch) : 7.5 (W) x 7.5 (H)

Max Capacity : 1kg



Compact Size



Drawstring



Natural





Gift Pouch With Drawstring

Material : 5oz / 141.7gsm Canvas

Size(cm) : 22 (W) x 28 (H) x 10 (bottom depth)

(inch) : 8.7 (W) x 11 (H) x 4 (bottom depth)

Max Capacity : 1kg



Come with Handle



Drawstring



B0282



Natural

Red

Green

B0341



Natural



Green



Black



Back View



Book Band Case

Material : 10oz / 283.5gsm Canvas

Size(cm) : 18 (W) x 5 (H)

(inch) : 7.1 (W) x 2 (H)



Elastic Band



Zipper Closure



Ideally Fit In 15cm Ruler & 3 Pens



B0352

Natural



Green



Black



Multi-Purpose Zipper Pouch

Material : 12oz / 340.2gsm Canvas

Size(cm) : 24 (W) x 17 (H)

(inch) : 9.4 (W) x 6.7 (H)



Molded Plastic Zip Closure



Can Fit In A5 Size Documents

B0342



Multi-Purpose Zipper Pouch

Material : 12oz / 340.2gsm Canvas

Size(cm) : 24 (W) x 13.5 (H)

(inch) : 9.4 (W) x 5.3 (H)



Natural



Red



Green



Black



Molded Plastic Zip Closure



Large Storage





Sling Bag

Material : 10oz / 283.5gsm Canvas

Size(cm) : 36 (W) x 29 (H) x 12 (D)

(inch) : 14.2 (W) x 11.4 (H) x 4.7 (D)

Max Capacity : 10kg



Bigger Space



Side Depth



Front Zipper Pocket



Adjustable Shoulder Strap

Red

Navy Blue

B0305



Clearance Items



B0069 Carrier Bag With Button
36.5cm(w) x 34cm(h) x
11.5cm(bottom depth)



B0087 Carrier Bag
36cm(w) x 32cm(h) x 12.5cm(bottom depth)



B0244 Carrier Bag With
Inner Drawstring
36.5cm(w) x 34cm(h) x 11.5cm(bottom depth)



B0286 Sling Bag With Wooden Button
24.5cm(w) x 30cm(h)





Jute

Jute is decomposable in nature as it is made up of plant fibres. This statement also implies that jute is less likely to create waste, therefore saving the earth from being further polluted. For decades, this eco-friendly material has been widely used in the bag manufacturing.

Generally, jute bag has a great vogue for it is of very soft texture and its thread does not break off easily. It is also a good thermal insulator where any item placed inside the jute bag is less likely to be affected by the high temperature from the outside.





Carrier Bag With Zipper

Material : 330gsm Jute
 Size(cm) : 34 (W) x 30 (H) x 18 (D)
 (inch) : 13.4 (W) x 11.8 (H) x 7.1 (D)
 Max Capacity : 15kg



Cotton Core
Rope Handle



Wider Side
Depth



Zipper Closure



Natural



B0379



Zip Closure

B0385

Black

Natural



Carrier Bag With Coconut Button

Material : 330gsm Jute
 Size(cm) : 41 (W) x 31.5 (H) x 17 (D)
 (inch) : 16.1 (W) x 12.4 (H) x 6.7 (D)
 Max Capacity : 15kg



Coconut Button
Closure



Cotton Core
Rope Handle





B0386 Natural

Pink

Green



Colourful Mini Carrier Bag With PVC Window

Material : 330gsm Jute

Size(cm) : 15 (W) x 16.5 (H) x 10 (D)

(inch) : 5.9 (W) x 6.5 (H) x 3.9 (D)

Max Capacity : 5kg



Cane Handle



Product Visibility From Window

B0229



Colourful Mini Carrier Bag



Material : 330gsm Jute

Size(cm) : 18 (W) x 16 (H) x 18 (D)

(inch) : 7.1 (W) x 6.3 (H) x 7.1 (D)

Max Capacity : 5kg



Wider Side Depth



Cotton Core Rope Handle

Red

Blue

Green

Natural

Green +Natural

Blue +Natural

Red +Natural





Colourful Mini Jute Carrier Bag

Material : 330gsm Jute

Size(cm) : 18 (W) x 23 (H) x 18 (D)

(inch) : 7.1 (W) x 9 (H) x 7.1 (D)

Max Capacity : 8kg



Cotton Core
Rope Handle



Wide Side Depth



Ideally For
3 Tiers Tiffin



B0329

Natural

Pink

Purple

Green



B0392



Colourful Jute Carrier Bag (Medium)

Material : 330gsm Jute

Size(cm) : 26 (W) x 21 (H) x 15 (D)

(inch) : 10.2 (W) x 8.3 (H) x 5.9 (D)

Max Capacity : 10kg



Cotton Core
Rope Handle



Wide Side Depth





B0387

Natural



1's Bottle Bag

Material : 330gsm Jute

Size(cm) : 13 (W) x 33 (H) x 11 (D)

(inch) : 5.1 (W) x 13 (H) x 4.3 (D)

Max Capacity : 2kg



Cotton Core
Rope Handle



B0389

Natural



2's Bottle Bag

Material : 330gsm Jute

Size(cm) : 21 (W) x 33 (H) x 11 (D)

(inch) : 8.3 (W) x 13 (H) x 4.3 (D)

Max Capacity : 5kg

* Comes with Inner Divider



Cotton Core
Rope Handle





Carrier Bag

Material : 330gsm Jute (Bag) +
8oz Laminated Canvas (Front Pocket)

Size(cm) : 43 (W) x 35 (H) x 15 (D)
(inch) : 16.9 (W) x 13.8 (H) x 5.9 (D)

Max Capacity : 15kg



Velcro Closure
On Pocket



Cotton Core
Rope Handle



Front Pocket



Great Printing Result
On Canvas Pocket

B0271



B0356

Natural Orange Red Green Blue



Carrier Bag

Material : 330gsm Jute (Bag) +
8oz Laminated Canvas (Front Pocket)

Size(cm) : 30.5 (W) x 37 (H) x 15 (D)
(inch) : 12 (W) x 14.6 (H) x 5.9 (D)

Max Capacity : 15kg



Velcro Closure
On Pocket



Cotton Core
Rope Handle



Front Pocket



Great Printing Result
On Canvas Pocket



B0287



Natural

Red

Green

Light Blue



Carrier Bag

Material : 330gsm Jute

Size(cm) : 31 (W) x 35 (H)

(inch) : 12.2 (W) x 13.8 (H)

Max Capacity : 8kg



Side View



Jute Handle

B0188



Colourful Carrier Bag

Material : 330gsm Jute

Size(cm) : 36 (W) x 32 (H) x 10 (bottom depth)

(inch) : 14.2 (W) x 12.6 (H) x 4 (bottom depth)

Max Capacity : 10kg



Bottom Depth



Button Closure



Red

Green

Blue





Carrier Bag



B0127

Material : 330gsm Jute
 Size(cm) : 35.5 (W) x 28 (H) x 10 (bottom depth)
 (inch) : 14 (W) x 12.6 (H) x 3.5 (bottom depth)
 Max Capacity : 8kg



Bottom Depth



Cotton Webbing Handle

Natural



B0301

Natural



Sling Bag

Material : 330gsm Jute
 Size(cm) : 30.5 (W) x 35 (H) x 10.5 (D)
 (inch) : 12 (W) x 13.8 (H) x 4.1 (D)
 Max Capacity : 8kg



Coconut Button Closure



Adjustable Shoulder Strap



Sling Bag



B0130

Natural



Storage Box

Material : 330gsm Jute

Size(cm) : 27 (W) x 13 (H) x 19 (D)

(inch) : 10.6 (W) x 5.1 (H) x 7.5 (D)

Max Capacity : 8kg



Plantation



Food Storage



Stationery



Toiletries

B0132



Organiser

Material : 330gsm Jute

Size(cm) : 30 (W) x 31.5 (H)

(inch) : 11.8 (W) x 12.4 (H)

Max Capacity : 3kg

Natural



Hang In Car



Hang On Wall



Ideal For Office



Toiletries Organiser



Clearance Items



B0357 Carrier Bag With Zipper
46cm(w) x 40cm(h) x 15cm(bd)



B0246 Colourful Carrier Bag
36cm(w) x 30cm(h) x 12cm(d)



B0077 Carrier Bag
40cm(w) x 32cm(h) x 10cm(d)



B0300 Carrier Bag
36cm(w) x 27cm(h) x 10cm(d)



B0075 Carrier Bag
35cm(w) x 29cm(h) x 9cm(d)



B0076 Carrier Bag
30cm(w) x 34cm(h) x 8cm(d)



B0078 Carrier Bag
31cm(w) x 36cm(h) x 9.5cm(d)



B0079 Sling bag
30.5cm(w) x 35cm(h) x 10.5cm(d)





Linenette

Linenette is known to be the world's strongest natural fiber. It is known to have similar texture with Jute. It is thicker than cotton and linenette has variable lengths, most of which are very long. This contributes to strength and longevity of its product. Linenette lasts a very long time. Linenette is known to gain strength when it is wet. It has the natural ability to prevent bacterial growth. Linenette reacts to the seasons and the body in contact with the cloth to give the best of all circumstances.





Foldable Carrier Bag

Material : Linenette + 60gsm Non-Woven
 Size(cm) : 44 (W) x 38 (H) x 11 (bottom depth)
 (inch) : 17.3 (W) x 15 (H) x 4.3 (bottom depth)
 Max Capacity : 7kg



Bottom Depth



Foldable Into Compact Size



B0336

Natural / Pink

Natural / Purple

Natural / Green

Natural / Tiffany Blue



B0335



Natural

White

Light Green

Tiffany Blue



Foldable Drawstring Bag

Material : Linenette + 60gsm Non-Woven
 Size(cm) : 33 (W) x 43 (H)
 (inch) : 13 (W) x 16.9 (H)
 Max Capacity : 7kg



Drawstring



Front Pocket



Foldable Into Compact Size





B0333



Natural

White

Pink

Light Purple

Light Green

Tiffany blue



Carrier Bag

Material : Linenette + 60gsm Non-Woven

Size(cm) : 36 (W) x 32 (H) x 10 (D)

(inch) : 14.2 (W) x 12.6 (H) x 4 (D)

Max Capacity : 7kg



Side Depth



Piping

B0332



Carrier Bag

Material : Linenette + 60gsm Non-Woven

Size(cm) : 31 (W) x 37 (H)

(inch) : 12.2 (W) x 14.6 (H)

Max Capacity : 7kg



Side View



Natural

White

Pink

Light Purple

Light Green

Tiffany Blue





Gift Pouch With Drawstring

Material : Linenette + 60gsm Non-Woven
 Size(cm) : 23 (W) x 21.5 (H) x 10 (bottom depth)
 (inch) : 9 (W) x 8.5 (H) x 3.9 (bottom depth)
 Max Capacity : 3kg



Drawstring



B0331

Natural

White

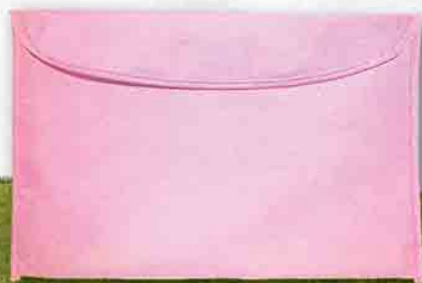
Pink

Light Green



B0330

Pink



Document Case

Material : Linenette + 60gsm Non-Woven
 Size(cm) : 34 (W) x 23 (H)
 (inch) : 13.4 (W) x 9.1 (H)



Velcro Closure





Juco

Juco is an unique natural material made from a blend of 70% jute and 30% cotton. The surface is much smoother with the good hand feeling touch. Juco widely become another eco alternative to cotton canvas. It is stronger and reusable and has a low carbon and water footprint, hence lower ecological impact.



Carrier Bag With Coconut Button

Material : Juco

Size(cm) : 34 (W) x 30 (H) x 19 (D)

(inch) : 13.4 (W) x 11.8 (H) x 7.5 (D)

Max Capacity : 15kg



Wider Side Depth



Coconut Button Closure



B0245

Natural



B0290

Natural

Back View



Laptop / Document Bag

Material : Juco

Size(cm) : 41 (W) x 31 (H) x 5 (D)

(inch) : 16.1 (W) x 12.2 (H) x 2 (D)

Max Capacity : 8kg



Wooden Button Closure



Adjustable Shoulder Strap



Sponge Layer Great For Laptop Protection



Come With Back Zipper Pocket



Felt

Felt fabric is generally produced by condensing either natural fibres or artificial fibres. As for eco-friendly felt, polyester fibre from reprocessed plastic bottles is used instead. The distinctive characteristics of this material allow it to be widely seen in the eco bag manufacturing. Discussing on its outlook, felt bag is of a fixed shape and is highly resilient where it springs back to its designed shape even after it is compressed. This feature rescues thousands of ladies with the habit of stacking bags, who often turned bag out of shape by piling up one after another in the aim of saving storage space. Besides, felt bag also has a clean cutting edge, making it appears neat at all time. Among its other winning features are high fluid permeability and great thermal insulating nature.





Flexi Multi-Purpose Case

Material : 3mm / 495gsm Felt
Size(cm) : 38 (W) x 29 (H)
(inch) : 14.9 (W) x 11.4 (H)

This PP sleeve
can be recycled
into a transparent
bookmark.



Ideal As
Laptop Sleeve,



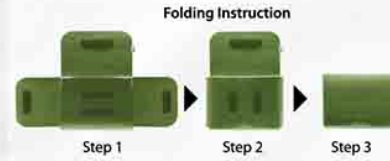
High Quality
Velcro Closure



Foldable



Mouse Pad



B0338



Grey

Green

B0303



2 Layers



Light Grey / Red

Light Grey / Green

Light Grey / Dark Grey



Exclusive Multi-Purpose Case With Inner Layer

Material : 3mm / 495gsm Felt
Size(cm) : 38 (W) x 29 (H)
(inch) : 15 (W) x 11.4 (H)

This PP sleeve
can be recycled
into a transparent
bookmark.



Ideal As
Laptop Sleeve,
Documents & Others



Magnetic
Button Closure



Mouse Pad



Well Organise
With Inner Layer



B0169



Orange

Red

Green

Light Grey

Dark Grey



Multi-Purpose Case

Material : 3mm / 495gsm Felt

Size(cm) : 38 (W) x 29 (H)

(inch) : 15 (W) x 11.4 (H)

This PP sleeve can be recycled into a transparent bookmark.



Ideal As Laptop Sleeve



PU With Button Closure



Mouse Pad

B0337



Multi-Purpose Zipper Pouch

Material : 3mm / 495gsm Felt

Size(cm) : 22 (W) x 15 (H)

(inch) : 8.7 (W) x 5.9 (H)



Red



Green



Light Grey



Molded Plastic Zipper



Zipper Pocket





Multi-Purpose Document Bag

Material : 3mm / 495gsm Felt & Good Quality PU Handle

Size(cm) : 45 (W) x 30 (H) x 2.5 (D)
(inch) : 17.7 (W) x 11.8 (H) x 1 (D)

Max Capacity : 6kg



Molded Plastic Zipper



Good Quality PU Handle



Green



Grey



B0339



B0234

Orange



Green



Grey



Executive Carrier Bag With Velcro

Material : 3mm / 495gsm Felt

Size(cm) : 41.5 (W) x 33 (H) x 12 (bottom depth)
(inch) : 16.3 (W) x 13 (H) x 4.7 (bottom depth)

Max Capacity : 15kg



Velcro Closure



Come With Front Pocket



Felt Handle



"V" Shape Stitches On Handle





B0094

Green

Brown

Grey



Carrier Bag With Zipper

Material : 1mm / 175gsm Felt

Size(cm) : 45 (W) x 34.5 (H) x 10 (D)

(inch) : 17.7 (W) x 13.6 (H) x 4 (D)

Max Capacity : 7kg



Zipper Closure



Polyester Handle

B0211



Carrier Bag With Wooden Button

Material : 1mm / 175gsm Felt

Size(cm) : 41.5 (W) x 35.5 (H) x 14 (D)

(inch) : 16.3 (W) x 14 (H) x 5.5 (D)

Max Capacity : 7kg

Grey

Green

Red



Polyester Handle



Wooden Button Closure





Carrier Bag

Material : 1mm / 175gsm Felt
 Size(cm) : 36 (W) x 36 (H) x 12 (D)
 (inch) : 14.2 (W) x 14.2 (H) x 4.7 (D)
 Max Capacity : 7kg



Side View



Felt Handle



B0120

B0277

Orange Red Green Light Grey Dark Grey



Carrier Bag

Material : 1mm / 175gsm Felt
 Size(cm) : 31 (W) x 35 (H)
 (inch) : 12.2 (W) x 13.8 (H)
 Max Capacity : 7kg



Side View



Felt Handle



B0126



Carrier Bag

Material : 1mm / 175gsm Felt
 Size(cm) : 34 (W) x 27.5 (H) x 11.5 (bottom depth)
 (inch) : 13.4 (W) x 10.8 (H) x 4.5 (bottom depth)
 Max Capacity : 7kg



Bottom Depth



Felt Handle

Clearance Items



B0219 Multi-Purpose Zipper Pouch
21.5cm(w) x 11cm(h) x 11cm(d)



B0095 Multi-Purpose Zipper Pouch
20cm(w) x 5cm(h) x 3.5cm(bottom depth)



B0097 Multi-Purpose Zipper Pouch
20cm(w) x 14cm(h)



B0272 1's Bottle Bag
10cm(w) x 31cm(h) x 10cm(d)



B0158 Multi-Purpose Travel Pouch
13cm(w) x 23cm(h)



B0275 Organiser Pouch
24cm(w) x 13cm(h) x 9.5cm(d)



B0319 Multi-Purpose Case
38cm(w) x 29cm(h)



Clearance Items



B0223 Travel Sling Pouch
13cm(w) x 17.5cm(h)



B0273 Organiser
38cm(w) x 50cm(h)



B0168 Multi-Purpose Bag
31cm(w) x 23cm(h)



B0270 Sling Bag
44.5cm(w) x 29.5cm(h) x 12cm(bottom depth)



B0157 Multi-Purpose Pouch Velcro
20cm(w) x 16.5cm(h) x 4.5cm(d)



B0098 Sling Bag
24.5cm(w) x 28cm(h)



B0228 Multi-purpose Pouch
10.5cm(w) x 18.5cm(h)



B0224 Name Card Holder
11cm(w) x 9.5cm(h)



B0320 Multi-Purpose Case
29cm(w) x 38cm(h)



B0135 Multi-purpose Zipper Pouch
12cm(w) x 8cm(h) x 2.5cm(bottom depth)



B0049 Carrier Bag
33cm(w) x 35cm(h) x 10cm(d)



B0050 Carrier Bag
33cm(w) x 35cm(h) x 10cm(bottom depth)



B0190 Carrier Bag with Eye-Lid
45.5cm(w) x 39.5cm(h) x 13cm(d)



B0200 Carrier Bag With Ribbon
50.5cm(w) x 31cm(h) x 14cm(bottom depth)



B0230 Multi-purpose Case
38cm(w) x 129cm(h)



B0268 Multi-purpose Case
37.5cm(w) x 29cm(h) x 2.5cm(d)



*N*on-woven

Non-woven fabric, in literal, tells that it is not made by weaving, nor it is by knitting. You may then wonder how it is produced. Non-woven fabric actually uses either machine, chemical, or thermal heat to join up tiny fibres and here forms the fabric. It is often being classified as an ecological fabric as it is recyclable. Of course, its new life is only formed after going through appropriate treatments. Commonly used in the medical and engineering field, it is now easy to also pick up its scent in the bag manufacturing.

Seeing and getting a non-woven bag in Malaysia is as easy as pie. It is in great demand due to its distinctive features that few others fabric can replace. Non-woven bag is flame retardant, meaning that it has the ability to delay fire from further spreading, increasing its safety value. Non-woven bag is also liquid repellence. Additionally, non-woven fabric is a bacteria barrier, making non-woven bag comparable more hygienic than any other.





Heavy Duty Carrier Bag

Material : 100gsm Non-Woven
 Size(cm) : 33 (W) x 35.5 (H) x 23 (D)
 (inch) : 13 (W) x 14 (H) x 9.1 (D)
 Max Capacity : 8kg



Wider Side Depth



Piping



Crossed Stitches



Large Capacity, Great For Grocery



B0373

White Red Green Blue Black



B0393



Yellow

Pink

Green

Blue

Grey



Heavy Duty Carrier Bag With Strap

Material : 100gsm Non-Woven
 Size(cm) : 33 (W) x 35.5 (H) x 23 (D)
 (inch) : 13 (W) x 14 (H) x 9.1 (D)
 Max Capacity : 8kg



Wider Side Depth



Durability With Straps From Top To Bottom



Crossed Stitches



Large Capacity, Great For Grocery



B0376



Carrier Bag

Material : 100gsm Non-Woven

Size(cm) : 36 (W) x 36 (H) x 12 (D)

(inch) : 14.2 (W) x 14.2 (H) x 4.7 (D)

Max Capacity : 6kg



Piping



Side Depth

B0083



Carrier Bag

Material : 80gsm Non-Woven

Size(cm) : 27 (W) x 33 (H) x 12 (D)

(inch) : 10.6 (W) x 13 (H) x 4.7 (D)

Max Capacity : 6kg



Side Depth



Piping





Carrier Bag (Ultrasonic)

Material : 100gsm Non-Woven
 Size(cm) : 38 (W) x 34 (H) x 13.5 (bottom depth)
 (inch) : 15 (W) x 13.4 (H) x 5.3 (bottom depth)
 Max Capacity : 3kg



Bottom Depth



Ultrasonic



B0351



Carrier Bag (Ultrasonic)

Material : 100gsm Non-Woven
 Size(cm) : 26 (W) x 26 (H) x 9 (bottom depth)
 (inch) : 10.2 (W) x 10.2 (H) x 3.5 (bottom depth)
 Max Capacity : 3kg



Bottom Depth



Ultrasonic



B0088



Carrier Bag (Ultrasonic)

Material : 80gsm Non-Woven

Size(cm) : 32 (W) x 35 (H) x 9.5
(bottom depth)

(inch) : 12.6 (W) x 13.8 (H) x 3.7
(bottom depth)

Max Capacity : 3kg



Bottom Depth



Ultrasonic

B0241



2-In-1 Cooler & Warmer Bag

Material : 100gsm Non-Woven +
2.0mm Foam + Aluminium Foil

Size(cm) : 28 (W) x 18 (H) x 18 (D)
(inch) : 11 (W) x 7.1 (H) x 7.1 (D)

Max Capacity : 5kg



Can Fit In
12 Bottles Of
Can Drinks



Zipper Closure



Keep Cool For +3-4 hours
Keep Warm For +1 hours



Come With
Aluminium Foil



2-In-1 Cooler & Warmer Bag

Material : 100gsm Non-Woven +
1.5mm Foam + Aluminium Foil

Size(cm) : 30 (W) x 35 (H) x 20 (bottom depth)
(inch) : 11.8 (W) x 13.8 (H) x 7.9 (bottom depth)

Max Capacity : 8kg



B0031



Support 8kg Weight



Zipper Closure



Keep Cool For +2-3 hours
Keep Warm For +1 hours



Come With Aluminium Foil

Clearance Items



B0025 Carrier Bag (Ultrasonic)
38cm(w) x 34cm(h) x 13.5cm(bottom depth)



B0039 Carrier Bag (Ultrasonic)
26cm(w) x 26cm(h) x 9cm(bottom depth)



B0061 Carrier Bag (Ultrasonic)
31cm(w) x 34cm(h)



B0064 Carrier Bag (Ultrasonic)
38cm(w) x 32cm(h) x 10cm(d)



B0089 Carrier Bag
18cm(w) x 18cm(h) x 10cm(d)



B0018 Carrier Bag
32cm(w) x 34cm(h)



B0030 Carrier Bag
36cm(w) x 34.5cm(h) x 9.5cm(bottom depth)



B0029 Tote Bag
29cm(w) x 36cm(h) x 11cm(bottom depth)





Clearance Items



B0068 Recycle Handle Bag
36cm(w) x 43cm(h) x 12cm(d)



B0072 Glitter Eco Bag
38cm(w) x 38cm(h) x 10cm(d)



B0084 Glitter Eco Bag
35.5cm(w) x 40cm(h) x 10cm(d)



B0092 Glitter Eco Bag
35cm(w) x 40cm(h) x 10cm(d)



B0093 Glitter Eco Bag
48cm(w) x 34cm(h) x 10cm(d)



B0125 Sling Bag
36cm(w) x 30cm(h) x 8cm(d)



B0032 Document Case With Velcro
23cm(w) x 34cm(h)



B0340 Laundry Bag
42cm(w) x 51cm(h)



B0043 Batik Series
36cm(w) x 36cm(h) x 12cm(d)



B0042 Carrier Bag
42cm(w) x 38cm(h) x 8cm(bottom depth)



B0065 Eco Series
38cm(w) x 33cm(h) x 12cm(d)



B0066 Ribbon Gift Bag
36cm(w) x 36cm(h) x 16cm(d)



B0067 Apron
68cm(w) x 79.5cm(h)



B0236 Apron
62cm(w) x 80cm(h)

Nylon

Nylon is a synthetic fabric made from petroleum products. It is lightweight and provide incredible tensile strength, durability and resistance to damage. It also takes dye easily, making nylon fabrics available in a wide array of colours for consumers. Nylon is a flexible textile and as a result, it appears in a wide range of applications, from clothing to climbing equipment.



6

Nylon Foldable

Fruits Bag





B0360



Strawberry Bag

B0361



Orange Bag



B0362



Kiwi Bag



B0363



Dragon Fruit Bag



B0364



Watermelon Bag



Foldable Into
Compact Size



Adjustable
Button

Material : T190 Nylon
Size(cm) : 38 (W) x 38 (H)
(inch) : 15 (W) x 15 (H)
Max Capacity : 3kg





B0390

Pink

Blue

Black



Extendable for Bigger Storage

33cm
12cm
18cm

Folded View

28cm



Extendable & Foldable Travelling Bag

Material : T210 Nylon
Size(cm) : 57.5 (W) x 45 (H) x 22 (D)
(inch) : 22.6 (W) x 17.7 (H) x 8.7 (D)
Max Capacity : 8kg



Luggage Handle-Thru Pocket For Stability



Foldable Into Small Size

B0391

Green

Blue

Black



Foldable Backpack

Material : Nylon
Size(cm) : 23.5 (W) x 45 (H) x 14 (D)
(inch) : 9.3 (W) x 17.7 (H) x 5.5 (D)
Max Capacity : 6kg



Front Pocket



Side Pocket



Foldable



Nylon 52





Foldable Carrier Bag

Material : T190 Nylon
 Size(cm) : 38 (W) x 38 (H)
 (inch) : 15 (W) x 15 (H)
 Max Capacity : 5kg



Foldable Into
 Compact Size



B0358

B0276

Grey /
 Fluorescent Yellow

Grey /
 Fluorescent Orange

Grey /
 Fluorescent Pink

Grey /
 Fluorescent Green



Fluorescent Foldable Drawstring Bag

Material : T190 Nylon
 Size(cm) : 47 (W) x 31 (H) x 9 (bottom depth)
 (inch) : 18.5 (W) x 12.2 (H) x 3.5 (bottom depth)
 Max Capacity : 5kg



Drawstring Bag



Stay Safe With
 Eye Catching
 Fluorescent Colours



Foldable To
 Compact Size





B0359



Green

Red

Blue



2-In-1 Cooler & Warmer Bag

Material : 100% Polyester + 1.5mm Foam + Aluminium Foil

Size (cm) : 32 (W) x 21 (H) x 11 (bottom depth)
(inch) : 12.6 (W) x 8.3 (H) x 4.3 (bottom depth)

Max Capacity : 3kg

Closure : Zip



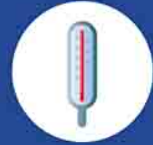
Polyester Handle



Come With Aluminium Foil



Perfectly Fit In Bento



Keep Cool For +2-3 hours
Keep Warm For +1 hours

B0008



Drawstring Bag

Material : T210 Nylon

Size(cm) : 33 (W) x 43 (H)

(inch) : 13 (W) x 16.9 (H)

Max Capacity : 3kg



Backpack



Eyelid

Red

Blue

Black



Nylon 54





Travel Organiser

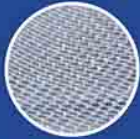


B0242

Material : 100% Polyester
 Size(cm) : Mesh Pouch: 39 (W) x 11 (H) x 30 (D)
 Pouch: 23 (W) x 18 (H) x 5.5 (D)
 (inch) : Mesh Pouch: 15.4 (W) x 11.8 (H) x 4.3 (D)
 Pouch: 9.1 (W) x 7.1 (H) x 2.2 (D)



Dual Zipper



Netting Finishing
For Ventilation



Ideal Storage
For Adaptors,
Cosmetics, etc



Zipper
Closure



Grey

Clearance Items



B0317 Multi-Purpose Pouch
20.5cm(w) x 29cm(h) x 12.5cm(d)



B0227 Foldable Trolley Bag
37cm(w) x 45cm(h) x 50cm(d)



B0024 Pineapple Fruit Foldable Bag
38cm(w) x 38cm(h)



B0063 Apple Fruit Foldable Bag
38cm(w) x 38cm(h)





600D

600D is a synthetic (petroleum-based) fiber with a high-strength, excellent resiliency, high abrasion resistance, and low absorbency (so the fibers dry quickly). It is smooth and lightweight and resistant to creasing, stretching, shrinking and mildew. It washes well and is not damaged by sun or weather. 600D is also wrinkle resistant and is used very often in everyday clothing. It has many uses for homes and industries as well.



2-in-1 Cooler & Warmer Bag

Material : 600D

Size(cm) : 29 (W) x 18.5 (H) x 13 (D)

(inch) : 11.4 (W) x 7.3 (H) x 5.1 (D)

Max Capacity : 8kg



Side Netting Pocket



Front Pocket



Large Storage



Keep Cool For ± 4 hours
Keep Warm For ± 3 hours

B0368

Grey

Black



B0369



2-in-1 Cooler & Warmer Bag

Material : 255D

Size(cm) : 30 (W) x 30 (H) x 20 (D)

(inch) : 11.8 (W) x 11.8 (H) x 7.9 (D)

Max Capacity : 10kg



Pink

Green

Blue

Grey



Velcro Closure



Large Storage



Premium Quality
Aluminium Foil



Keep Cool For ± 5 hours
Keep Warm For ± 4 hours





B0255



Red

Blue

Grey



Sling Bag

Material : 600D

Size(cm) : 38 (W) x 26 (H) x 14 (D)

(inch) : 15 (W) x 10.2 (H) x 5.5 (D)

Max Capacity : 10kg



Front Zipper Pocket

B0259



Laptop Backpack

Material : 1680T

Size(cm) : 29.5 (W) x 45.5 (H) x 13.5 (D)

(inch) : 11.6 (W) x 17.9 (H) x 5.3 (D)

Max Capacity : 15kg

Red

Blue

Grey



Front Pocket



Sides Netting Pockets



Comfort Cushion Laptop Pocket



600D



Laptop Backpack

Material : 1680D
 Size(cm) : 39 (W) x 40 (H) x 8 (D)
 (inch) : 15.4 (W) x 15.7 (H) x 3.1 (D)
 Max Capacity : 15kg



Double Layer
Front Pocket



Comfort Cushion
Laptop Pocket



Comfort Padded
Shoulder Strap



B0116

B0117

Red

Blue



Laptop Backpack

Material : 600D + 1680D
 Size(cm) : 32 (W) x 44 (H) x 8 (D)
 (inch) : 12.6 (W) x 17.3 (H) x 3.1 (D)
 Max Capacity : 15kg



Well Organise With
Multi Compartments



Comfort Cushion
Laptop Pocket



3-in-1
Multi Carrier





B0114

Green

Blue



Laptop Bag

Material : 420T

Size(cm) : 37 (W) x 30 (H) x 9 (D)

(inch) : 14.6 (W) x 11.8 (H) x 3.5 (D)

Max Capacity : 15kg



Front Pocket
With Netting
Compartment



Well Organise With
Multi Compartments



Velcro Strap
& Cushion For
Laptop Storage

B0253

Orange

Pink

Blue



Laptop Bag

Material : 600D

Size(cm) : 38 (W) x 29 (H) x 9 (D)

(inch) : 15 (W) x 11.4 (H) x 3.5 (D)

Max Capacity : 15kg



Front Zipper
Pocket



Grab Handle



Comfort Cushion
Laptop Pocket



600D 60





Laptop Bag

Material : 600D

Size(cm) : 39 (W) x 29 (H) x 11 (D)

(inch) : 15.4 (W) x 11.4 (H) x 4.3 (D)

Max Capacity : 15kg



Front Pocket



Inner Pocket



Ideally Used For Trolley Bag



Red

Blue

B0262

B0254

Red

Blue



Laptop Bag

Material : 600D

Size(cm) : 37 (W) x 29 (H) x 9 (D)

(inch) : 14.6 (W) x 11.4 (H) x 3.5 (D)

Max Capacity : 15kg



Front Pocket



Zipper Pocket



Grab Handle



Comfort Cushion Laptop Pocket





B0057

Blue

Red



Laptop Bag

Material : 600D

Size(cm) : 40 (W) x 37 (H) x 9 (D)

(inch) : 15.7 (W) x 14.6 (H) x 3.5 (D)

Max Capacity : 15kg



Come With
Laptop Sleeve



Come With
Back Pocket



Open View

B0258

Yellow

Red

Blue



Backpack

Material : 600D

Size(cm) : 43 (W) x 30 (H) x 16 (D)

(inch) : 16.9 (W) x 11.8 (H) x 6.3 (D)

Max
Capacity : 15kg



Front Pocket



Side Netting Pockets



600D

62





Shoe Bag

Material : 600D

Size(cm) : 22 (W) x 33 (H) x 16 (D)

(inch) : 8.7 (W) x 13 (H) x 6.3 (D)

Max Capacity : 2kg



Inner Pocket With Netting Compartments



Back Pocket Space



Ventilated Shoe Pouch



Comfort Grab Handle



B0118

Red



B0261

Green

Red

Blue



Shoe Bag

Material : 600D

Size(cm) : 32 (W) x 15 (H) x 24 (D)

(inch) : 12.6 (W) x 5.9 (H) x 9.4 (D)

Max Capacity : 2kg



Front Pocket With Compartments



Ventilated Shoe Pouch



Grab Handle





Clearance Items



B0220 2-in-1 Cooler & Warmer Bag
42cm(w) x 25cm(h) x 13cm(bd)



B0111 Sling Bag
29cm(w) x 34.5cm(h) x 10cm(d)



B0262 Laptop Bag
39cm(w) x 29cm(h) x 11cm(d)



B0055 Backpack
30cm(w) x 44cm(h) x 20cm(d)



B0256 Travel Bag
50cm(w) x 28cm(h) x 20cm(d)



B0119 Waist Pouch
25cm(w) x 16cm(h) x 13cm(d)



B0257 Waist Pouch
23cm(w) x 12.5cm(h) x 7cm(d)



B0110 Sling Bag
38cm(w) x 31cm(h) x 8cm(d)



B0113 Sling Bag
37cm(w) x 31cm(h) x 8cm(d)



B0250 Backpack
30cm(w) x 44cm(h) x 16cm(d)





Recycle Paper



Recycle paper, in simple explanation, means paper made with the use of fibre from waste paper. Instead of being a trash, waste paper in this way is processed and given a brand new life. Contrary to the conventional method of producing paper from the fibre of raw wood, recycle paper directly generates impacts in reducing the number of tree needed for paper manufacturing and saving up a considerable amount of energy consumptions.

It is common to see the use of recycle paper in the packaging industry, thus it should not come as a surprise to stumble upon a recycle paper bag. As compared to plastic bag, recycle paper bag has a solid shape, thus it is more presentable. Needless to say, recycle paper bag which falls under the category of eco bag, is more environmental friendly when it is to be set side by side with plastic bag.





B0052

Natural



Recycle Paperbag

Material : 175gsm Recycle Paper

Size(cm) : 28 (W) x 32.5 (H) x 10 (D)

(inch) : 11 (W) x 12.8 (H) x 4 (D)

Max Capacity : 2kg



Recycle Paper Handle

B0038



Recycle Paperbag

Material : 175gsm Recycle Paper

Size(cm) : 30 (W) x 40 (H) x 10 (D)

(inch) : 11.8 (W) x 15.7 (H) x 4 (D)

Max Capacity : 2kg



P.P. Cord String Handle

Natural





Cutey Fruity



**CUTEY,
REUSABLE & ECO-FRIENDLY**

Travel, daily life use as well. Fashionable, practical and multi-function design and comfortable to wear. This cutey fruity bag is made of 100% cotton, durable, washable, can easily fold it and put into your bag when not in use. Shopping shoulder bag keep your belonging safe, a small pocket inside to storage key, pen ect.



B0099



Fish Bag

Material : Velvet + T190 Polyester
 Size(cm) : 40.5 (W) x 33 (H) x 10 (BD)
 (inch) : 15.9 (W) x 13 (H) x 4 (BD)
 Handle(cm) : 61 (L) x 3.6 (W)
 (inch) : 24 (L) x 1.4 (W)
 Max Capacity : 7kg

B0108



Strawberry Bag

Material : Velvet + 100% Cotton
 Size(cm) : 39 (W) x 36.5 (H) x 10.5 (BD)
 (inch) : 15.4 (W) x 14.4 (H) x 4.1 (BD)
 Handle(cm) : 58 (L) x 1.4 (W)
 (inch) : 22.8 (L) x 0.6 (W)
 Max Capacity : 7kg





Dog Bag

Material : 100% Cotton

Size(cm) : 26.5 (W) x 20.5 (H) x 13.5 (BD)

(inch) : 10.4 (W) x 8 (H) x 5.1 (BD)

Handle(cm) : 38 (L) x 2 (W)

(inch) : 15 (L) x 0.8 (W)

Max Capacity : 3kg



White

Beige



Brown

Grey



B0113



B0105

Dark Pink

Grey



Light Pink

Blue



Elephant Bag

Material : Velvet + T190 Polyester

Size(cm) : 27.5 (W) x 20.5 (H) x 13 (BD)

(inch) : 10.8 (W) x 8.1 (H) x 5.1 (BD)

Handle(cm) : 44 (L) x 2 (W)

(inch) : 17.3 (L) x 0.8 (W)

Max Capacity : 3kg





Eco Stationery

The title 'Eco Stationery' is written in a white, elegant serif font. The letter 'E' is decorated with pink and white flowers. To the right of the word 'Eco' is a white line-art icon of a hand holding three leaves. The word 'Stationery' is also decorated with pink and white flowers.

Recycle Paper

Recycle paper is now widely used to make stationery, such as pen, pencils, notepad, etc. It is a green material to use as we know the stationery consumption is quite high every year.

Bamboo Pen

The ECO-friendly bamboo pen which its barrel is made from bamboo, a member of the grass family, which is one of the quickest growing plants in the world. Bamboo pens give the feeling of nature. It is recyclable, lightweight, strong and stable.





Bamboo Ballpen

Material : Bamboo

Size(cm) : 1.1 (diameter) x 13.8 (length)

(inch) : 0.4 (diameter) x 5.4 (length)

Ink Colour : Black



Smooth Writing
Performance



Retractable



P0082

Silver

Grey



P0079

Silver



Bamboo Ballpen

Material : Bamboo

Size(cm) : 1 (diameter) x 13.5 (length)

(inch) : 0.4 (diameter) x 5.3 (length)

Ink Colour : Black



Smooth Writing
Performance



Retractable



Stylish Design





P0083

Red

Green

Blue

Black



Bamboo Ballpen

Material : Bamboo

Size(cm) : 0.9 (diameter) x 13.7 (length)

(inch) : 0.4 (diameter) x 5.4 (length)

Ink Colour : Black



Smooth Writing Performance



Retractable

P0056



Bamboo Ballpen

Material : Bamboo

Size(cm) : 1 (diameter) x 14 (length)

(inch) : 0.4 (diameter) x 5.5 (length)

Ink Colour : Black



Smooth Writing Performance



Retractable

Red

Green

Blue

Black





a) Eco Triangular 2B Pencil
b) Eco Round HB Pencil

Material : Wooden Material

Size(cm) : 0.7 (diameter) x 17.5 (length)

(inch) : 0.3 (diameter) x 6.9 (length)



Break Resistant
Leads and
Superior Sharpening



Fits Perfectly on to
Your Fingers

a)P0050

Natural



Triangular Shape



Triangular Shape
Prevents
Pencil Rolling

2B

b)P0053

Natural



Rounded Shape

HB



S0023



**Message Box
With Photo Frame**

Material : Recycle Paper

Size (cm) : 10.2 (W) x 3.2 (H) x 10 (D)

(inch) : 4 (W) x 1.3 (H) x 4 (D)

S0073



**Message Box With Photo
Frame And Stationery Holder**

Material : Recycle Paper

Size (cm) : 14.5 (W) x 8 (H) x 10 (D)

(inch) : 5.7 (W) x 3.1 (H) x 4 (D)

S0074



**Message Box With Photo
Frame And Stationery Holder**

Material : Recycle Paper

Size (cm) : 20.5 (W) x 3.5 (H) x 10.5 (D)

(inch) : 8.1 (W) x 1.4 (H) x 4.1 (D)





S0095

Natural

Green

Black



Canvas Notebook

Material : Canvas (Cover)
Woodfree Paper (Notes)

Size(cm) : 13.5 (W) x 18.5 (H) x 2 (D)
(inch) : 5.3 (W) x 7.3 (H) x 0.8 (D)



ECO-Friendly
Woodfree Paper



Curve Corner

S0092



Linenette Notebook

Material : Linenette (Cover)
Woodfree Paper (Notes)

Size(cm) : 14.9 (W) x 21 (H) x 1.5 (D)
(inch) : 5.8 (W) x 8.3 (H) x 0.6 (D)



White

Green

Grey



ECO-Friendly
Woodfree Paper



Curve Corner





Custom Made With Full Colours Printing



Cork Notebook

Material : Cork (Cover)
Woodfree Paper (Notes)

Open Size(cm) : 14 (W) x 21 (H) x 1.5 (D)
(inch) : 5.5 (W) x 8.3 (H) x 0.6 (D)

Close Size(cm) : 28.3 (W) x 21 (H)
(inch) : 11.1 (W) x 8.3 (H)



Come With
Elastic Band



S0088

S0087

Red

Blue

Brown

Dark Grey



Mini Notebook

Material : Micro Fibre (cover) +
Woodfree Paper (notes)

Close Size(cm) : 10 (W) x 17.7 (H) x 1.8 (D)
(inch) : 3.9 (W) x 7 (H) x 0.7 (D)

Open Size(cm) : 21 (W) x 17.7 (H)
(inch) : 8.3 (W) x 7 (H)



Elastic Band



Special Emboss
Effect



Ribbon Bookmark
Effect





S0096

Natural

Green



Recycle Paper Notebook

Material : 700gsm Kraft Board (Cover)
Woodfree Paper (Notes)

Size(cm) : 15.5 (W) x 17.5 (H) x 1 (D)
(inch) : 6.1 (W) x 6.9 (H) x 0.4 (D)



Wire-O
Binding



S0085



Recycle Paper Notebook

Material : Recycle Paper

Close Size(cm) : 14 (W) x 20.5 (H)
(inch) : 5.5 (W) x 8.1 (H)

Open Size(cm) : 32 (W) x 20.5 (H)
(inch) : 11 (W) x 8.1 (H)



Writing Pad

Natural



Clearance Items



S0068 Stationery Set
20.3cm(w) x 2.3(h) x 4.2cm(d)



S0021 Recycle Notebook
With Ballpen (Big)
14cm(w) x 18cm(h) x 0.8cm(d)



S0032 Recycle Notebook
With Ballpen (Small)
11cm(w) x 13.5cm(h) x 0.8cm(d)



S0091 Multi-Functional Stationery Cube
9.5cm(w) x 9.5cm(h) x 9.5cm(d)



S0090 Bamboo Notebook
With Recycle Ballpen
14.5cm(w) x 18.3cm(h) x 2cm(d)





Green Living

Making sustainable choices are an important component of green living. Fortunately, green living is rapidly growing in popularity. There are plenty of green living product options that can be implemented in your living in order to create a great look while remaining ECO-friendly. Not only will you be doing your part to conserve and protect the environment, green living is better for your health and can save you money in the long run.





**A Plastic Straw
Is Manufactured
In 1 Minute**

**A Plastic Straw
Is Used For
An Average
Of 10 Minutes**

**A Plastic Straw
Decomposes Over
A Period
Of 100 Years**

**Plastic Straws are Really Bad For The Ocean
Polluting The Water And Killing Marine Life.**



STRAW SET A

LW0034 LW0035 LW0036 LW0037



4 Pieces Reusable 18/304 Stainless Steel Straw Set

Material : High Quality Stainless Steel 18/304

LW0034 Straight Straw

(cm) : 0.6 (diameter) x 21.5 (H)

(inch) : 0.2 (diameter) x 8.5 (H)

LW0035 Curve Straw

(cm) : 0.6 (diameter) x 20.5 (H)

(inch) : 0.2 (diameter) x 8.1 (H)

LW0036 Bubble Tea Straw

(cm) : 1.2 (diameter) x 21.5 (H)

(inch) : 0.5 (diameter) x 8.5 (H)

LW0037 Brush

(cm) : 1 (diameter) x 23 (H)

(inch) : 0.4 (diameter) x 9.3 (H)

STRAW SET B

LW0034 LW0035 LW0036 LW0037 LW0039 LW0040



6 Pieces Reusable 18/304 Stainless Steel Straw & Cutlery Set

Material : High Quality Stainless Steel 18/304

LW0034 Straight Straw

(cm) : 0.6 (diameter) x 21.5 (H)

(inch) : 0.2 (diameter) x 8.5 (H)

LW0035 Curve Straw

(cm) : 0.6 (diameter) x 20.5 (H)

(inch) : 0.2 (diameter) x 8.1 (H)

LW0036 Bubble Tea Straw

(cm) : 1.2 (diameter) x 21.5 (H)

(inch) : 0.5 (diameter) x 8.5 (H)

LW0037 Brush

(cm) : 1 (diameter) x 23 (H)

(inch) : 0.4 (diameter) x 9.3 (H)

LW0039 Spoon

(cm) : 3.6 (W) x 17.2 (H)

(inch) : 1.4 (W) x 6.8 (H)

LW0040 Fork

(cm) : 2.3 (W) x 17.3 (H)

(inch) : 0.9 (W) x 6.8 (H)





STRAW SET C

LW0034 LW0035 LW0036 LW0037 LW0038 LW0039 LW0040



7 Pieces Reusable 18/304 Stainless Steel Straw & Cutlery Set

Material : High Quality Stainless Steel 18/304

LW0034 Straight Straw

(cm) : 0.6 (diameter) x 21.5 (H)

(inch) : 0.2 (diameter) x 8.5 (H)

LW0035 Curve Straw

(cm) : 0.6 (diameter) x 20.5 (H)

(inch) : 0.2 (diameter) x 8.1 (H)

LW0036 Bubble Tea Straw

(cm) : 1.2 (diameter) x 21.5 (H)

(inch) : 0.5 (diameter) x 8.5 (H)

LW0037 Brush

(cm) : 1 (diameter) x 23 (H)

(inch) : 0.4 (diameter) x 9.3 (H)

LW0038 Chopstick

(cm) : 0.6 (diameter) x 18.5 (H)

(inch) : 0.2 (diameter) x 7.3 (H)

LW0039 Spoon

(cm) : 3.6 (W) x 17.2 (H)

(inch) : 1.4 (W) x 6.8 (H)

LW0040 Fork

(cm) : 2.3 (W) x 17.3 (H)

(inch) : 0.9 (W) x 6.8 (H)



Packaging For Stainless Steel Straw Set & Cutlery Set

LW0031



LW0032



LW0033



Velvet Drawstring Pouch

Material : Velvet

Size(cm) : 8 (W) x 26 (H)

(inch) : 3.1 (W) x 10.2 (H)

Canvas Drawstring Pouch

Material : Canvas

Size(cm) : 7 (W) x 26 (H)

(inch) : 2.8 (W) x 10.2 (H)

Organic Wheat Box

Material : Organic Wheat

Size(cm) : 6 (W) x 24.5 (H) x 3 (D)

(inch) : 2.4 (W) x 9.6 (H) x 1.2 (D)



Rice Husks



Biodegradable



Anti Bacterial



Made From 100% Bisphenol A (BPA) Free Material



From -30°C To 120°C



Made From Rice Husk Fibre



Food Safe



Tree Free



Durability



Dishwasher Safe (water < 95°C)



Microwavable 3 minutes



Rice Husk Material:

- Heavy Metal
- Plasticizer
- Formaldehyde



REACH Report



FDA Test



LFGB



ROHS_NoRestriction

**100% INNOCUOUS,
NATURAL & HEALTHY CHOICE**

Eco rice husks mainly made from agricultural by products - Rice husks is natural, healthy and does not contain any harmful substances. Eco Rice Husks is in line with the world food hygiene standards and indicator (US. FDA health standards, SGS & TUV certify to meet EU testing indicators). Discarded after used can biodegrade in the natural environment.



Eco Rice Husks Mug

Material : Rice Husks
 Size(cm) : 8.8 (diameter) x 17 (H)
 (inch) : 3.5 (diameter) x 6.7 (H)
 Capacity : 550ml



This packaging can be recycled into a Cup Holder.



LD0060

Orange

Pink

Green

Blue

Brown



LW0028



LW0029



LW0030

Orange Pink Green Blue Brown



Eco Rice Husks Cutlery Set (Western)

Material : Rice Husks
 Spoon Size(cm) : 17 (L) x 3.8 (W)
 (inch) : 6.7 (L) x 1.5 (W)
 Fork Size(cm) : 17 (L) x 3 (W)
 (inch) : 6.7 (L) x 1.2 (W)

Eco Rice Husks Cutlery Set (Oriental)

Material : Rice Husks
 Spoon Size(cm) : 17 (L) x 3.8 (W)
 (inch) : 6.7 (L) x 1.5 (W)
 Chopstick Size(cm) : 17 (L)
 (inch) : 6.7 (L)

Neoprene Zipper Pouch

Material : Neoprene
 Size(cm) : 20 (L) x 6 (W)
 (inch) : 7.9 (L) x 2.4 (W)



This packaging can be recycled into a Stationery Holder.



ORGANIC WHEAT



**FOOD GRADE, SAFE & GREEN
FOR NATURE**

Organic Wheat Fiber made from wheat straw and polymer resin composite made by a special process of green biological, this material does not contain any toxic and harmful ingredients by plasticizers, heavy metals, bisphenol A. Organic Wheat Fiber is pure natural health products.



Organic Wheat Cutlery Set

Material : Organic Wheat Fiber

Spoon(cm) : 17.5 (L) x 2.3 (W)

(inch) : 6.9 (L) x 0.9 (W)

Fork(cm) : 17.5 (L) x 2.5 (W)

(inch) : 6.9 (L) x 1 (W)

Chopstick(cm) : 18.5 (L)

(inch) : 7.3 (L)

Box(cm) : 12.5 (L) x 5.5 (W)

(inch) : 4.9 (L) x 2.2 (W)



Portable With Compact Size



Fork, Spoon & Chopstick



LW0193

Green

Yellow

Blue

Orange



LW0046

Natural

Pink

Green

Blue



Organic Wheat Cutlery Set

Material : Organic Wheat Fiber

Spoon(cm) : 16 (L) x 3.5 (W)

(inch) : 6.3 (L) x 1.4 (W)

Fork(cm) : 15.5 (L) x 2.5 (W)

(inch) : 6.3 (L) x 1 (W)

Chopstick(cm) : 18 (L)

(inch) : 7.1 (L)

Box(cm) : 5.5 (L) x 21 (W) x 3 (D)

(inch) : 2.2 (L) x 8.3 (W) x 1.2 (D)



Come With Organic Wheat Box



Fork, Spoon & Chopstick





LD0107

Natural

Pink

Green

Blue



Organic Wheat Tumbler

Material : Organic Wheat Fiber

Size(cm) : 7 (diameter) x 18.5 (H)

(inch) : 2.8 (diameter) x 7.3 (H)

Capacity : 400ml



Leakproof



Rubber Groove For
Excellent Seal



Easy To Carry
With Handle



Organic Wheat Glass Tumbler

Material : Organic Wheat Fiber & Glass

Size(cm) : 6 (diameter) x 20.5 (H)

(inch) : 2.4 (diameter) x 8.1 (H)

Capacity : 320ml



Glass Layer For
Lemonade,
Hot & Cold Beverage



Easy To Carry



Double Wall
Protection



Natural

Pink

Green

Blue

LD0098





Organic Wheat Glass Tumbler



Material : Organic Wheat Fiber & Glass
Size(cm) : 6.2 (diameter) x 23.6 (H)
(inch) : 2.4 (diameter) x 9.3 (H)
Capacity : 380ml



Easy To Carry



Glass Layer For Lemonade, Hot & Cold Beverage



Leakproof



Mobile Phone Stand Holder



LD0083

Pink

Green

Blue



Organic Wheat Double Wall Tumbler

Material : Organic Wheat Fiber
Size(cm) : 5.5 (diameter) x 16.5 (H)
(inch) : 2.2 (diameter) x 6.5 (H)
Capacity : 350ml



Rubber Groove For
Excellent Seal



Anti Hot With
Double Wall



Organic Wheat Tumbler With Handle

Material : Organic Wheat Fiber
Size(cm) : 8 (diameter) x 15.5 (H)
(inch) : 3.1 (diameter) x 6.1 (H)
Capacity : 450ml



Pink

Green

Blue



Unique Handle



Come With
Stirrer



LD0084





Organic Wheat Lunch Box

Material : Organic Wheat Fiber
 Size(cm) : 20.5 (W) x 7 (H) x 13 (D)
 (inch) : 8 (W) x 2.8 (H) x 5.1 (D)
 Capacity : 1000ml



Breathable Button



Easy To Carry



Come With 4 Safety Lock



Rubber Groove For Excellent Seal



Pink



Green



Blue



LD0110

LD0111

Natural



Pink



Green



Blue



Organic Wheat Lunch Box (3 Tiers)

Material : Organic Wheat Fiber
 Size(cm) : 18 (W) x 10.5 (H) x 8 (D)
 (inch) : 7.1 (W) x 4.1 (H) x 3.1 (D)
 Capacity : 900ml



Safety Lock



Come With Fork & Spoon





LD0103

Natural

Pink

Blue



Organic Wheat Lunch Box

Material : Organic Wheat Fiber
Size(cm) : 17.5 (W) x 7 (H) x 13 (D)
(inch) : 6.9 (W) x 2.8 (H) x 5.1 (D)
Capacity : 800ml



Safety Lock



Come with Spoon & Chopstick



Organic Wheat Lunch Box (Double Layers)

Material : Organic Wheat Fiber
Size(cm) : 15 (W) x 9 (H) x 9.5 (D)
(inch) : 5.9 (W) x 3.5 (H) x 3.7 (D)
Capacity : 900ml



Natural

Pink

Blue

LD0085



3 Layers



Safety Lock



Come With Spoon





Organic Wheat Lunch Box With Soup Cup

Material	: Organic Wheat Fiber
Soup Cup(cm)	: 7.6 (diameter) x 12 (H)
(inch)	: 3 (diameter) x 4.7 (H)
Lunch Box(cm)	: 21.5 (W) x 9.5 (H) x 12.5 (D)
(inch)	: 8.5 (W) x 3.7 (H) x 4.9 (D)
Capacity(Soup Cup)	: 330ml
(Lunch Box)	: 1100ml



Easy To Carry



Come With
2 Compartments



Come With 4
Safety Lock



Pink



Green



LD0113



LD0093

Natural



Organic Wheat Lunch Box (Double Layers) With Tumbler Set

Material	: Organic Wheat Fiber
Mug Size(cm)	: 7.5 (diameter) x 16.5 (H)
(inch)	: 3 (diameter) x 6.5 (H)
Lunch Box(cm)	: 19.5 (W) x 9 (H) x 12 (D)
(inch)	: 7.7 (W) x 3.5 (H) x 4.7 (D)
Capacity(Mug)	: 400ml
(Lunch Box)	: 800ml



2 Layers



Double Sided
Secure Lock



Leak Proof



Come With
Fork & Spoon



Eco

Silicone



**STRICTLY SELECTED FOOD-GRADE
SILICONE MATERIAL, BPA-FREE,
SAFE & TASTELESS**

Food containers with lid made from 100% FDA compliant non-toxic, BPA free, food grade silicone, just like the ingredients of baby pacifier. They are odorless, tasteless, non-stick, leak-proof and easy to clean. The silicone food storage container come with double spoon for free, upgrade sealing ring and clasp keep food leakproof and fresh.



Leakproof Silicone Retractable Coffee Mug

Material : 100% Food Grade Silicone and PP (Cup Lid)

Size(cm) : 9.5 (D) x 17 (H)
(inch) : 3.7 (D) x 6.7 (H)

Capacity : 500ml



Heat Insulation
Cup Sleeve



Sealing Silicone Lid
For Dust-Proof



Ideally For
-50°C to 200°C



Non Toxic



LD0106



LD0108



Silicone Retractable Lunch Box (3 Compartments)

Material : 100% Food Grade Silicone and PP (Lid)

Size(cm) : 24 (W) x 6.5 (H) x 17.5 (D)
(inch) : 9.5 (W) x 2.6 (H) x 6.9 (D)

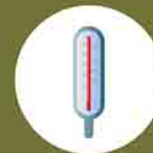
Capacity : 1100ml



3 Compartments



Foldable Design
For Easy Storage



Ideally For
-50°C to 200°C



Non Toxic



ECO  **100% Food Grade**
PP



**MADE FROM SUSTAINABLE
FOOD-GRADE PP MATERIAL**

Polypropylene is a plastic. Of the commercial plastics on the market today, polypropylene is considered one of the safest. It's FDA-approved for food contact, so you'll find polypropylene in food containers like those that hold yogurt, cream cheese, and butter products.



Stainless Steel 18/304 Lunch Box (Double Layers)

Material : High Quality Stainless Steel 18/304 (Inner)
High Quality Food Grade (Outer)

Size(cm) : 22 (W) x 11 (H) x 12 (D)
(inch) : 8.7 (W) x 4.3 (H) x 4.7 (D)

Capacity : 1600ml



Easy To Carry



Rubber Groove For
Excellent Seal



Safety Lock



Pink

Green

Blue

LD0112



LD0114

Pink

Green

Blue



Stainless Steel 18/304 Lunch Box (Double Layers)

Material : High Quality Stainless Steel 18/304 (Inner)
High Quality Food Grade (Outer)

Size(cm) : 14.5 (diameter) x 18.1 (H)
(inch) : 5.7 (diameter) x 7.1 (H)

Capacity : 1600ml



Easy To Carry



Leak Proof



Safety Lock





LD0091



Grey

Green



Eco Lunch Box

Material : PP (Food Grade)

Size(cm) : 18.2 (W) x 7 (H) x 11 (D)

(inch) : 7.7 (W) x 2.8 (H) x 4.3 (D)

Capacity : 750ml



Deeper Inner Storage



Secure Lock



Come with Spoon



Eco Lunch Box (Double Layers)

Material : PP (Food Grade)

Size(cm) : 13.5 (W) x 11 (H) x 13.5 (D)

(inch) : 5.3 (W) x 4.3 (H) x 5.3 (D)

Capacity : 800ml



Easy To Carry



2 Layers Food Separation



User Friendly Locking System



Come With Spoon

LD0064

Pink

Blue

Green



Green Living Product

96



SGS Certification



ECO Ceramic Thermal Flask

Material : Ceramic (Inner), PP (Inner Lid)
Size(cm) : 7 (D) x 22 (H)
(inch) : 2.7 (D) x 8.6 (H)
Capacity : 370ml



Ceramic Inner



Original Taste



Lead Free



Suitable For All Types Of Acidic & Alkaline Drink



Turquoise

Light Green

Pink

LD0105



LD0101

Pearl White

Pink

Blue



Handy 18/304 Stainless Steel Thermo Flask

Material : High Quality Stainless Steel 18/304
Size(cm) : 6.5 (D) x 23.5 (H)
(inch) : 2.6 (D) x 9.3 (H)
Capacity : 500ml



Vacuum Insulated



18/304 Inner



Outdoor Durability





100% Organic Bamboo Towel



Soft & Silky



Highly Absorbent



Anti Bacterial



UV Protection



Biodegradable



Static Free



NATURALLY ANTIBACTERIAL AND SOFT FOR SKIN

Bamboo towels are made from bamboo fiber. The Bamboo plant is naturally antibacterial, so it is grown without pesticides, it can be spun into yarn without harsh chemical treatments. Softer and more absorbent than cotton, cashmere or silk, bamboo towels are completely biodegradable.



Bath Towel

Material : 100% Bamboo Fiber
 Size(cm) : 140 (L) x 70 (W)
 (inch) : 55.1 (L) x 27.6 (W)



Yellow
 Blue
 Green
 Pink

TEX0032

TEX0048



Yellow
 Pink
 Green
 Blue



Hand Towel

Material : 100% Bamboo Fiber
 Size(cm) : 72 (L) x 34 (W)
 (inch) : 28.3 (L) x 13.4 (W)

PACKAGING AVAILABLE

TEX 0039
Towel Sleeve



Bath Towel &
Hand Towel

TEX 0037
Gift Box



This packaging can
turn into a Hanging
Letter Box Holder.

TEX 0038
VIP Box



This packaging can
turn into a pair of
Clothes Hanger.

TEX 0050
Drawstring Bag



Comes in Black or
Brown Drawstring.



Cotton Towel



**100% COTTON,
QUICK ABSORBENT**

With its super-soft feel and plush texture, this pure cotton towel feels like luxury against the skin. The lightweight design is absorbent without being heavy, and it dries fast, making it perfect for everyday use. This product supports responsibly sourced cotton.

TEX0051



Pink

Green

Blue

Khaki



Cotton Bath Towel

Material : 100% Cotton
Size(cm) : 140 (L) x 70 (W)
(inch) : 55.1 (L) x 27.6 (W)



Breathable
Towel



High Water
Absorption



Soft & Comfort

PACKAGING



TEX0050

Drawstring Bag

Comes in Black or Brown Drawstring



UM0004



30" Silver Coated Golf Umbrella

Material : T190

Size(cm) : 76.2

(inch) : 30



Fully Fibre Shaft



Silver Coated



24" Auto Wooden Frame Umbrella

Material : Pongee

Size(cm) : 61

(inch) : 24



Auto Open



Piping



Wooden J
Handle

Blue

UM0006





27" Heavy Duty Auto Silver Coated Umbrella

Material : T190

Size(cm) : 68.6

(inch) : 27



Heavy Duty
"Runner"



Double "Rib"



Double
"Stretcher"



Auto Open



J Handle



Silver Coated Inner

Black / Silver



Red / Silver

UM0007

LW0041

Black



LCD Writing Board

Material : LCD ; ABS

Size(cm) : 9 (W) x 13 (H) x 0.5 (D)

(inch) : 3.5 (W) x 5.1 (H) x 0.2 (D)



LCD Writing



Saving Up To
100,000 Pcs



Come With Pen



Battery



Suitable For
Travel



Erase Button





LW0128

Red

Blue

Black

Back View



PU ID Card With Refillable Bottle

Material : PU (Pouch)

High Quality Pet (Bottle)

Pouch Size(cm) : 7.5 (W) x 12.5 (H)

(inch) : 3 (W) x 4.9 (H)

Bottle Size (cm) : 4 (W) x 10 (H)

(inch) : 1.6 (W) x 4 (H)



Access Card / Student Card



Can Hook With Lanyard



Refillable Hand Sanitizer Or Lotion

*Exclude Lanyard



Transparent 30ml Refillable Bottle

Material : High Quality PET

Size(cm) : 4 (W) x 10 (H)

(inch) : 1.6 (W) x 4 (H)

Capacity : 30ml



Easy To Carry



Leakproof



Lightweight



LW0127

Transparent





Transparent Mini Container

Material : Plain PP Box (Food Grade)
Size(cm) : 11 (W) x 2 (H) x 9 (D)
(inch) : 4.3 (W) x 0.8 (H) x 3.5 (D)



Anti-dust



Ultra-Lightweight



Transparent



LW0136



LW0123

Transparent



Multi-Purpose Transparent Zipper Pouch

Material : PET
Size(cm) : 22 (W) x 15 (H)
(inch) : 8.7 (W) x 5.9 (H)



Custom Made
Printing



Small Towel



Small Items
Storage





- SpO2 Measuring
- Pulse Rate Measuring
- Backlit Screen
- One-Button Measurement
- OLED Display
- Automatic Shut-Down
- Low Consumption

LW0160

White

Black



yonker



Yonker Oximeter

Size(cm) : 5.8 (W) x 3 (H) x 3.5 (D)
 (inch) : 2.3 (W) x 1.2 (H) x 1.4 (D)



Easy To Use



Yonker Certificate Of Conformity



Come With MDA Approval



Comes With Lanyard & Storage Bag



Adults / Kids Reusable Face Shield

Material : 33gsm PET
 Size(cm) : 32.5 (W) x 22 (H) x 0.25 (D)
 (inch) : 12.8 (W) x 8.7 (H) x 0.1 (D)



180° Wide Range Isolation Protection



Compatible With Glasses & Face Mask



High Light Transmission

Transparent

LW0073





Adult Face Shield With Glasses Frame

Material : 100% PC

Size(cm) : 17 (W) x 14 (H)

(inch) : 6.7 (W) x 5.5 (H)



99% High Light
Transmission



Double Sided
Anti Fogging



Compatible With
Glasses & Face Mask



LW0157



Clear



Clear / frosted



Pink / frosted



Blue / frosted

LW0162



Clear



Pink



Blue



Kids Face Shield With Glasses Frame

Material : 100% PC

Size(cm) : 21 (W) x 12.2 (H)

(inch) : 8.3 (W) x 4.8 (H)



99% High Light
Transmission



Double Sided
Anti Fogging



Compatible With
Glasses & Face Mask

LW0191

Grey

Blue

Black

Zip Lock Packaging



Adult



**4 Layers Washable
Antibacterial
Nano Face Mask (Adult)**

- Material(Outer Layer) : Polyester Fabric
 (Middle Layer) : 2 Layers of Synthetic Non-Woven (Surgical Grade)
 (Inner Layer) : Micro Quick Dry Fabric (Antibacterial)
 Size (cm) : 22 (W) x 15 (H)
 (inch) : 8.7 (W) x 5.9 (H)



Reusable Hand
Wash Up To 45 Times



Anti-Bacterial
& Odourless



3D Cutting To
Cover Your Face
Completely



Cost Saving
Due To Washable



**3 Layers Washable
Antibacterial
Nano Face Mask (Adult)**

- Material(Outer Layer) : Polyester Fabric
 (Middle Layer) : Synthetic Non-Woven (Surgical Grade)
 (Inner Layer) : Micro Quick Dry Fabric (Antibacterial)
 Size (cm) : 22 (W) x 15 (H)
 (inch) : 8.7 (W) x 5.9 (H)



Reusable Hand
Wash Up To 45 Times



Anti-Bacterial
& Odourless



3D Cutting To
Cover Your Face
Completely



Cost Saving
Due To Washable



Adult

White

Red

Zip Lock Packaging



LW0131

3 Layers Washable Antibacterial Nano Face Mask (Teenager)



Material(Outer Layer) : Polyester Fabric
 (Middle Layer) : Synthetic Non-Woven (Surgical Grade)
 (Inner Layer) : Micro Quick Dry Fabric (Antibacterial)
 Size (cm) : 20.5 (W) x 13.5 (H)
 (inch) : 8 (W) x 5.3 (H)



8-12 year old

LW0129

Zip Lock Packaging



Reusable Hand
Wash Up To 45 Times



Anti-Bacterial
& Odourless



3D Cutting To
Cover Your Face
Completely



Cost Saving
Due To Washable

LW0130



4-7 year old

3 Layers Washable Antibacterial Nano Face Mask (Kid)



Material(Outer Layer) : Polyester Fabric
 (Middle Layer) : Synthetic Non-Woven (Surgical Grade)
 (Inner Layer) : Micro Quick Dry Fabric (Antibacterial)
 Size (cm) : 18 (W) x 12 (H)
 (inch) : 7.1 (W) x 4.7 (H)

Zip Lock Packaging



Reusable Hand
Wash Up To 45 Times



Anti-Bacterial
& Odourless



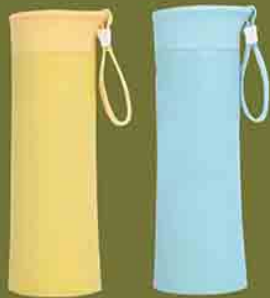
3D Cutting To
Cover Your Face
Completely



Cost Saving
Due To Washable



Clearance Items



LD0070 Stainless Steel
Thermo Flask (320ml)
7cm(d) x 19cm(h)



LD0033 Glass Sport Bottle (400ml)
7cm(d) x 25.5cm(h)



LD0061 A5 Notebook Bottle (850ml)
14.5cm(w) x 20.5cm(h)



LD0062 Shaker (250ml)
7cm(d) x 10cm(h)



LD0053 Glass Tumbler (450ml)
7cm(d) x 18.5cm(h)



LD0047 Eco Ceramic Mug (200ml)
7.5cm(d) x 17cm(h)



LD0045 Anti Slip Sport Bottle (500ml)
8cm(d) x 20.5cm(h)



LD0027 Plastic Sport Tumbler (400ml)
6cm(d) x 20.2cm(h)



LD0025 Eco Mug (400ml)
7.4cm(d) x 8.5cm(h)



LD0010 Plastic Sport Bottle (600ml)
7cm(d) x 20.5cm(h)



LD0030 Plastic Sport Bottle (750ml)
7.5cm(d) x 26cm(h)



LD0056 Plastic Sport Bottle (450ml)
6.5cm(d) x 8cm(h)



Clearance Items



LD0028 Express Chill Bottle (550ml)
8.2cm(d) x 19.8cm(h)



LD0046 Plastic Sport Bottle (400ml)
7cm(d) x 25cm(h)



LD0041 Double Wall
Eco Lunch Box (550ml)
10cm(d) x 13cm(h)



LD0042 Plastic Bottle-Cup Set (750ml Bottle + 260ml Cup)
8.5cm(d) x 18.5cm(h) (Bottle)
7cm(d) x 10.5cm(h) (Cup)



LD0051 Leakproof Eco Lunch Box (790ml)
17cm(w) x 6cm(h) 12.5cm(d)



LD0043 Snap & Stack Eco Lunch Box (1600ml)
17cm(w) x 9cm(h) x 12.5cm(d)



LW0009 Canvas Storage Bucket
30cm(d) x 28cm(h)



LW0043 Keychain Measuring Tape
4.5cm(w) x 10cm(h) x 1cm(d)
Measuring Length: 150cm



LW0044 Disposable Paper Straw
(Assorted Designs)
0.5cm(diameter) x 19.5cm(length)



LW0045 Collapsible Straw
0.9cm(diameter) x 23cm(length) (Straw)
3.3cm(w) x 7.2cm(h) x 2.7cm(d) (Box)



LD0089 Eco Lunch Box (Double Layers)
13.8cm(diameter) x 13.8cm(h)



TEX0041 Bamboo Hand Towel
41cm(l) x 28cm(w)





LIMA Official Merchandiser





Licensing Products by Warner Bros, DC Comic & Justice League





Custom Made & Special Sourcing



▲ Lunch Box



▲ Drinkware



▲ Luggage Bag

Custom Made & Special Sourcing



▲ Glass Food Containers



▲ Ceramic Diningware Set



▲ Cutlery Set



Custom Made & Special Sourcing



▲ Straws



▲ Cooler & Warmer Bag

▲ Shopping Bag



▲ Corporate Uniform & T-Shirts

Custom Made & Special Sourcing



▲ Full Colours PU Pouch / Clutch Bag



▲ Thumbdrive



▲ Rubberised Promotion Gifts

Product displaying the trademarks of various companies are shown only to illustrate the extensive graphic capabilities of Eco Friend and Eco Fans. All trademarks displayed are property of the trademarks' owner; and do not constitute endorsement of Eco Friend and Eco Fans products or any relationship between Eco Friend, Eco Fans and the trademarks owner. Trademark bearing merchandise can only be purchased by or through the trademarks owner company.



Custom Made & Special Sourcing



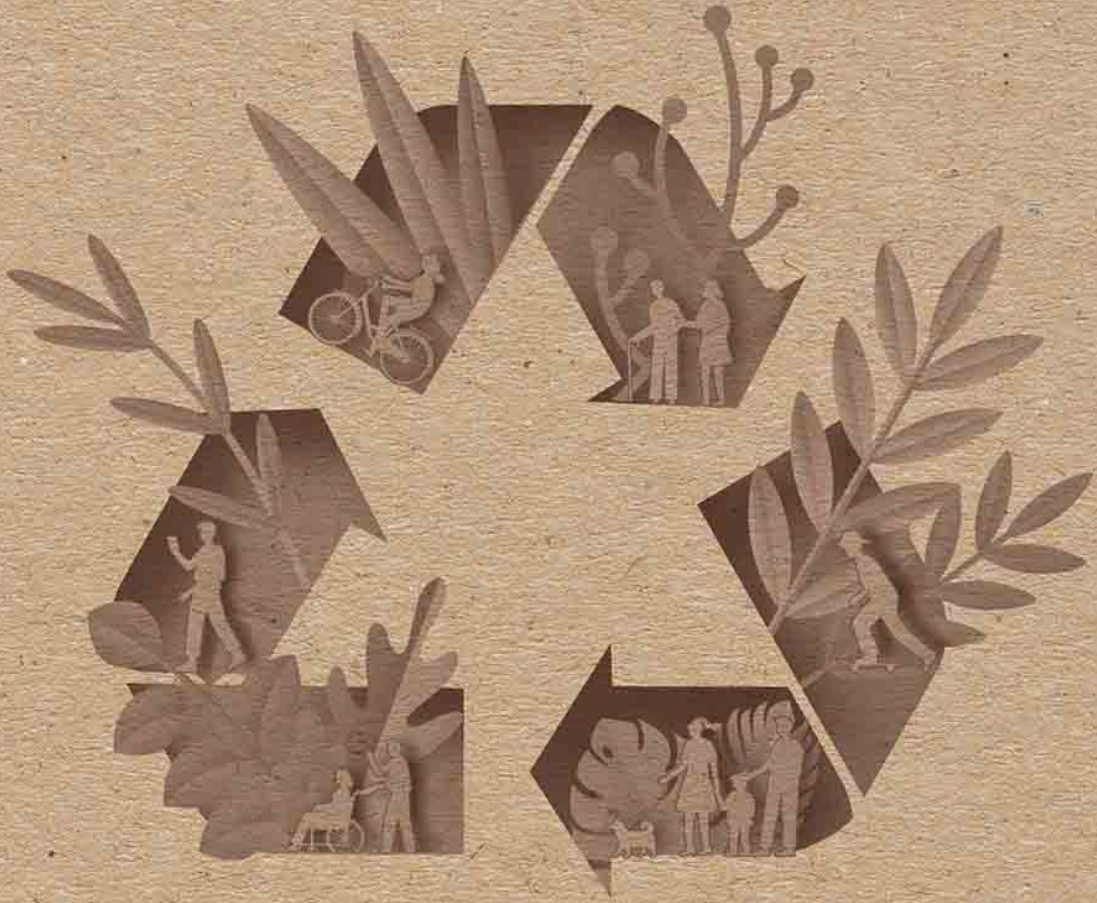
▲ Cookware



▲ Diary & Organiser



▲ MoonCake Packaging



Authorised Dealer's Stamp

